

Innovation 2014

The 25MT 3x1 FC model is a compact and powerful mini-crane. It integrates a short jib with a hydraulic telescope. The jib is mounted on an 18° slewing ring (Option).

This model particularly suits for changing the moulds for the injection press.

It uses a **3-cylinder kinematic system** developed by **Mobilev Cranes** allowing for greater angular motion of the jib.

All speeds are adjustable from 0 to 100% with the wired remote control or with the radio remote control (optional).

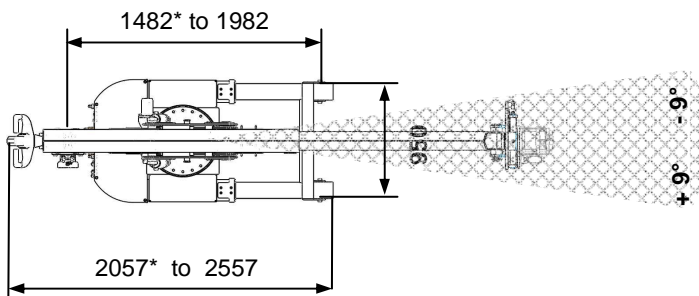
Updated May 22th, 2015



Patented Kinematic



Created and made in France



* With variable wheelbase

Technical specifications



| | |
|---|-------------------|
| Maxi load | 3000 kg |
| Unladen weight (without options) | 2000 kg |
| Admissible slope in IX3 (unladen crane) | 18 % |
| Maxi translation speed | 3 km/h |
| Adjustable lifting speed | from 0 to 15 cm/s |
| Adjustable telescoping speed | from 0 to 13 cm/s |
| Batteries | 24V – 460 Ah |
| 24V cc silent motor driven pump..... | 3 kW |
| Ø x Front wheels width (mm) | 200 mm |
| Ø x Back wheels width (mm) | 450 mm |

Standard equipment

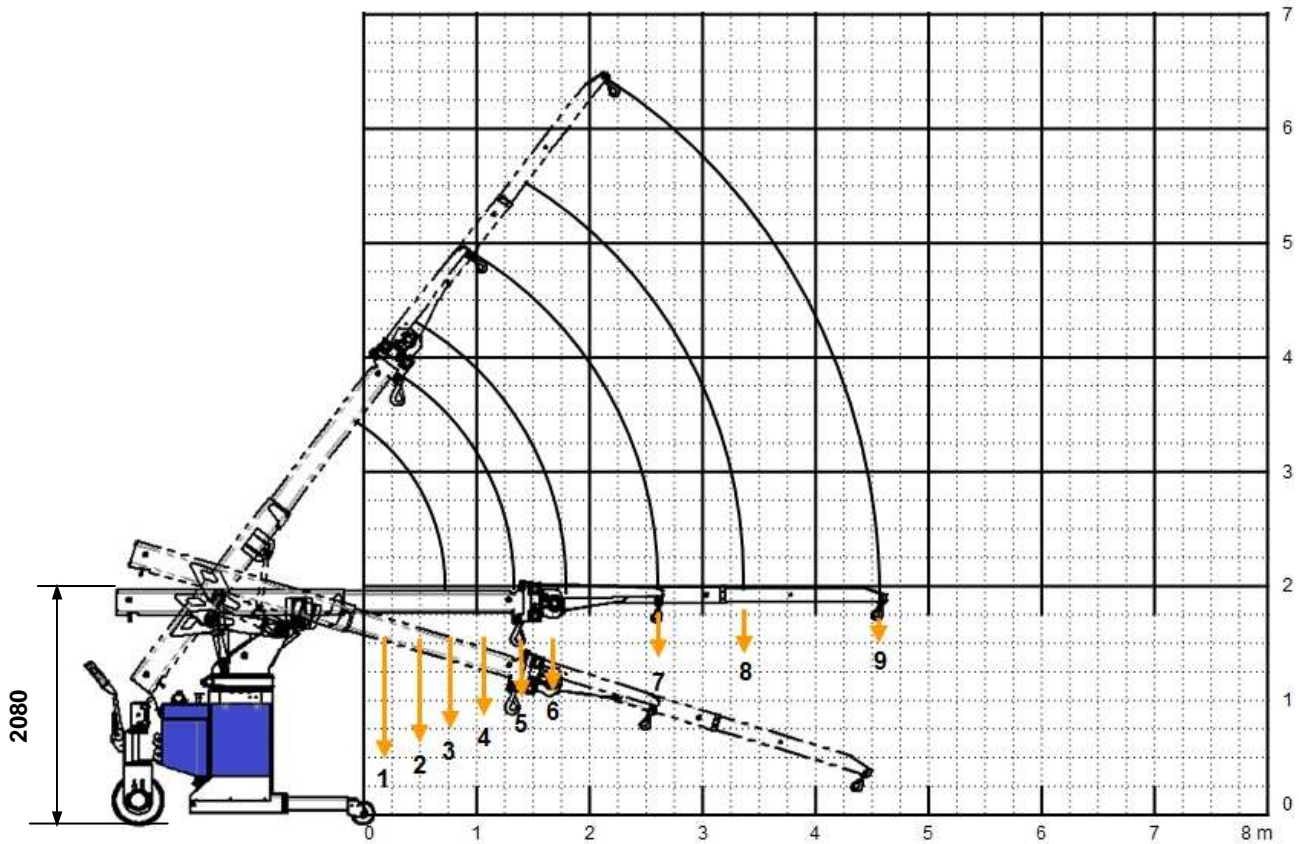
- Anti-tilt system
- 1 hydraulic drive wheel
- Polyurethane coating wheels
- Hydraulic telescopic jib
- Hydraulic drive assistance
- Automatic braking system
- Automatic parking brake
- Integrated electronic battery charger 220V~
- Wired remote control with potentiometer
- 2 storage boxes

Main options

- 18° slewing ring OR sliding table for hook's lateral displacement
- Variable wheelbase
- Additional jib 500 kg
- Additional jib with winch 500 kg
- Additional jib with manual telescope 500/350 kg
- Additional jib with manual telescope 350/250 kg
- Winch 2000 kg/1000 kg

Technical sheet 25MT 3X1 FC v2

Self-propelled mini-crane with accompanying operator



| | 1 | 2 | 3 | 4 | 5 | 6 | 7 | 8 | 9 |
|----------------------------------|------|------|------|------|------|------|------|------|------|
| Distance/ front wheels axle (mm) | 175 | 475 | 775 | 1075 | 1475 | 1675 | 2600 | 3300 | 4500 |
| Variable wheelbase in (kg) | 3000 | 2400 | 2040 | 1450 | 1040 | 890 | 500 | 350 | 250 |
| Variable wheelbase out (kg) | 1180 | 870 | 660 | 500 | 385 | 320 | - | - | - |



Option
Variable wheelbase
Stroke 500mm



4 axes wired remote control
with potentiometer